

## CITY OF EMBER (G)

*Hidden tunnels. Cryptic instructions. Monstrous creatures lurking in the shadows. Escape is the only option ...*

For generations, the people of the City of Ember have flourished in an amazing world of glittering lights.

But Ember's once powerful generator is failing... and the great lamps that illuminate the city are starting to flicker.

Now, two teenagers in a race against time, must search Ember for clues that will unlock the ancient mystery of the city's existence, and help the citizens escape before the lights go out forever.

## REVIEWS

"On the surface, *City of Ember* is an engaging story about two teens whose determination to find the truth and challenge the status quo ends up saving humanity. And the consistent theme of moving from darkness to light is an obvious spiritual metaphor.

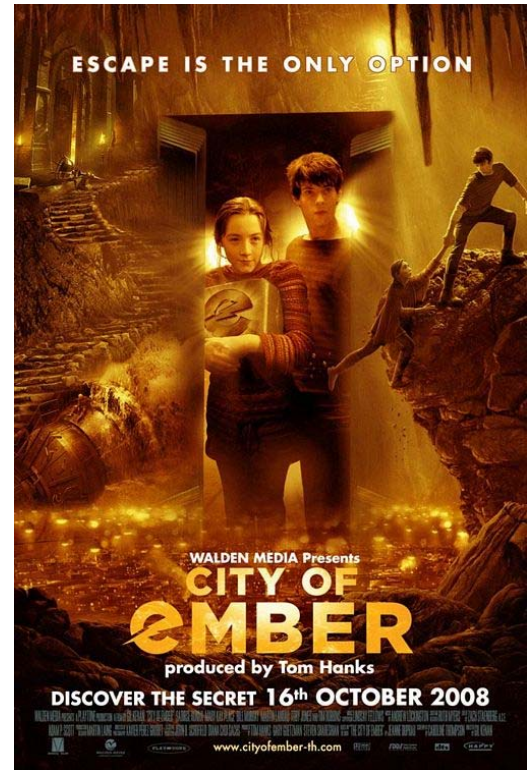
It's unusual, though, to have a children's film that deals with post-apocalyptic themes; these are usually saved for more adult films like the recent *Children of Men*.



It is also unusual in a film like this for the filmmakers to show so much restraint in telling what could have been quite a scary story given its obvious implications.

Rather than scare children about the future, it offers hope and some definite spiritual connections. It can certainly be used to spark conversation and learning, and not just serve as mindless entertainment." *INSIGHTS* magazine

"Ember is a city living in fear, ignorance, and ever-increasing poverty: both literal and metaphorical darkness threaten to engulf its hapless citizens. Only two 12-year-olds -- as impoverished and ignorant as everyone else, but gifted with a bit more curiosity and get-up-and-go -- stand between Ember and its plunge into utter blackness, both in the streets and in spirit." Goodreads.com



## DISCUSSION QUESTIONS



How would you respond in such a crisis? Is our culture nearing its expiration date?

Are there spiritual parallels in the crumbling world of Ember and the world that Doon and Lina believe will give to them the light and hope that they desire?

Lina's Aunt believes, somewhat naively, that everything will be alright if they wait out the 'blackouts' but she doesn't want to acknowledge

the city is on the brink of collapse. Is there a Biblical parallel here?

Lina and Doon have their positions chosen for them on 'Assignment Day' with disregard for their actual talents or gifts. Can we choose our own gifts? What does the Bible say about this? (Read 1 Corinthians. 12:11, 1 Corinthians. 12:28-31, Ephesians. 4:30 for some clues)

In a position of power and authority, Mayor Cole has put his own needs and desires above his people. He is no longer serving them, he is looking out for number one. The power accorded his office has corrupted him so that he seeks self-preservation at all costs. How can Mayor Cole be likened to the Pharisees?

The City of Ember was meant to be a temporary refuge for its citizens – how does this parallel our Christian lives?

The complex 'heart' of the City of Ember is a huge generator, it begins to falter and is unable to continue what does this say the man-made things we rely on to survive. Should we have faith in man-made things? Why? Why not?



After constructing the city a letter of escape, or salvation is left in the metal box, however over time people have forgotten the box and its important contents -- Doon and Lina find the clues and begin the quest. There are 'Builders' mentioned in the film – are they an allegory for God? Why? Why not?